



HOUSE - END TERRACE

**Best Lane
Canterbury Centre
Canterbury
CT1 2JB**

£2,650 Per Month

City Centre Location

5 double bedrooms over 5 floors

Separate living room

Dining area in kitchen

Opposite Marlowe theatre

The BEST Student house!

Bills package available

Three bathrooms

Email canterbury@absoluteliving.co.uk



absolute living

5 BED HOUSE - END TERRACE LOCATED

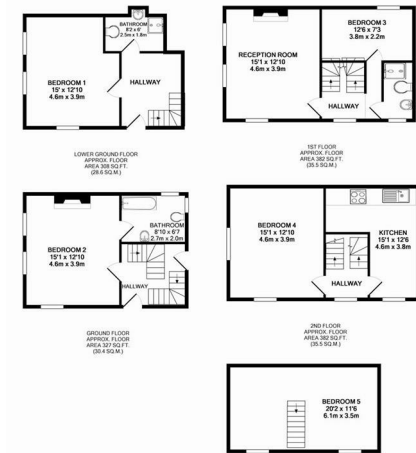
IN CANTERBURY

BEST LANE CT1. BLOCK VIEWING WEDS 20TH MAY 2026 - CALL 07960 777543. AVAILABLE JULY 2026. £530 per person per month for a complete group of 5. Video tour available or call to make viewing. Five double bedrooms over five floors with three bathrooms and a separate living room and kitchen/ diner! Stunning and spacious listed house right in the heart of Canterbury. Amazing house, first to see will take... massive bedrooms and a bedroom per floor with three bathrooms! Moments from the High Street and Marlowe Theatre. Please call or email canterbury@absoluteliving.co.uk to arrange a viewing. If the numbers have been removed by the portal please contact the

Call us on
020 3002 9002
hello@absoluteliving.co.uk



Most Central House in Canterbury. Separate Living Room and Separate Kitchen/ Dining Room. The lower floor offers a large double bedroom and a shower room with WC and sink, raised ground floor large double bedroom with en-suite bathroom, first floor large double, bathroom and living room, second floor large double and fully equipped kitchen and separate dining area, third floor large double bedroom. Very convenient for University of Kent and Canterbury Christ Church Universities.



Energy Efficiency Rating		Environmental Impact (CO ₂) Rating	
Current	Potential	Current	Potential
Very energy efficient - lower running costs		Very environmentally friendly - lower CO ₂ emissions	
(92 plus) A		(92 plus) A	
(81-91) B		(81-91) B	
(69-80) C		(69-80) C	
(55-68) D		(55-68) D	
(39-54) E		(39-54) E	
(21-38) F		(21-38) F	
(1-20) G		(1-20) G	
Not energy efficient - higher running costs		Not environmentally friendly - higher CO ₂ emissions	
England & Wales	EU Directive 2002/91/EC	England & Wales	EU Directive 2002/91/EC

Agents Note: Whilst every care has been taken to prepare these particulars, they are for guidance purposes only. All measurements are approximate and are for general guidance purposes only and whilst every care has been taken to ensure their accuracy, they should not be relied upon and potential buyers are advised to recheck the measurements.

